

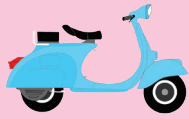
Stats: Potential spouses on Campus

BY ANITA MAN
Angsty Reporter

Potential Spouse: Engineering student

Average Stats:

Earning Potential: \$100,000-\$120,000
Shyness level: 85%
Nerdiness level: 100%
Flirting ability: 3%
Combat Power: 2,500



Usually found: Engineering building

Attacks: Awkwardness, numbers

Summary:

Engineering students tend to have the highest income potential out of all student breeds. They can only ever be found in the engineering building, and tend to run away quickly.

Potential Spouse: Business major

Average Stats:

Earning Potential: \$80,000-\$90,000
Attractiveness level: 30%
Flirting ability: 1%
Commitment level: 5%
CP: 1,000



Usually found: Playing in a sports event

Attacks: Team work, Numbers, Fortnite

Summary:

Business students are one of the most common types of potential spouses. Often either an evolution of an engineering student gone wrong, with similar but slightly worse stats, or a student athlete or misses their classes all the time.

Potential Spouse: Student athlete

Average Stats: See "Business Major"

Usually found: See "Business Major"

Attacks: See "Business Major"

Summary: See "Business Major"



Potential Spouse: English student

Average Stats:

Earning Potential: \$0-\$30,000
Angst: 92%
Math ability: 0.2%
Saving your English 101 paper: 95%
CP: 800

Usually Found: Local Coffee Shop

Attacks: Quoting Shakespeare, puns

Summary:

Catch this student if you're looking to always be competing for attention with a book, and if you'd love to someday grab Starbucks while visiting your spouse at work.



Potential Spouse: Political science major

Average Stats:

Earning Potential: \$40,000-\$60,000
Opinionated: 100%
Open mindness: 5%
Obsessing over the news: 100%
CP: 2,000

Usually Found: DeVos building

Attacks: Debate, discussing the Mueller report

Summary:

There are three breeds of political science major: Opinionated Democrat student, Opinionated Republican student, and the oh-wait-you're-actually-an-IR-major student. Each are more or less the same.



Potential Spouse: Nursing student

Average Stats:

Earning Potential: \$60,000-\$70,000
Strong stomach: 100%
Avoiding the Calvin Lock: 100%
Overbearing caring: 85%
CP: 900

Usually found: The Library

Attacks: Shots, describing graphic details from work

Summary:

This potential spouse has watched "Grey's Anatomy" three times, and thinks it has sufficiently prepared them for the future. If you catch one, prepare to be used for practice for taking blood pressure and getting a flu shot.



Potential Spouse: Fish House employee

Average Stats:

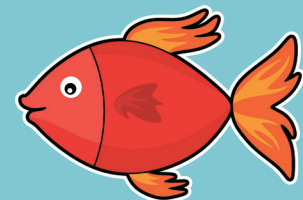
Earning Potential: \$20,000-\$80,000
Coffee making skills: 95%
Androgynous style: 70%
Sense of humor: 15%
CP: 3,000

Usually found: The Fish House

Attacks: Making great Spotify playlists

Summary:

A rare breed, these potential spouses will make you great coffee, and play you great music; but be prepared to hear about their opinion on Pete's Coffee.



ADVERTISEMENT



Catch up, stay on track, or get ahead with classes and formats that fit your work and social schedules, no matter where you spend the summer.

View spring/summer classes now!

Registration begins March 18

gvsu.edu/summer



Potential Spouse: Psychology major

Average Stats:

Earning Potential: \$10,000
Earning Potential after getting PhD: \$190,000
Empathy: 90%
Diagnosing their friends: 50%
CP: 350

Usually found: Applying for grad schools

Attacks: Giving you free therapy

Summary:

This potential spouse is a gamble. They will either never use their degree, or they will inevitably be in school for for ever. May think it's romantic to point to your head and tell you what part of the brain they're pointing to.



Potential Spouse: Geology student

Average Stats:

Earning Potential: \$90,000-100,000
Rocks: 100%
Flannel: 100%
Science: 5%
CP: 950

Usually found: The dice Museum

Attacks: Throwing rocks, naming rocks

Summary:

If you catch this potential spouse, you know they'll want a ring with raw rocks instead of a normal diamond. Will want you to bring them rocks for them to name. Not recommended for other science majors, because they will insist on also calling themselves scientists.



Potential Spouse: Chimes reporter

Average Stats:

Earning Potential: Millions
Attractiveness level: 100%
Commitment ability: 100%
Fun level: 100%
Intelligence: 100%
CP: 10,000

Usually found: Chimes office

Attacks: Being awesome, being great, being funny, being excellent, writing

Summary:

Of course, if you're looking for a spouse, the best possible catch is a Chimes writer. Just look at those stats.

"They're definitely the most attractive," said one student in the Chimes office who is definitely, not at all affiliated with the Chimes. "If you catch one, you should date them."

(Please someone date me)

